

# Magicloth Mop

**Easy to use super  
absorbent chamois mop**

**Holds up to 10 times its weight in water.**

**Wrings out easily with a simple twist of the handle.**

**Your hands never touch water.**

**Long lasting and replaceable mop-head is completely washable.**

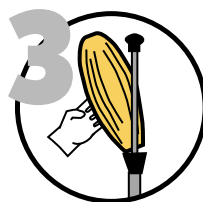
**Soft chamois-like fibers won't scratch fine floors.**



With one of your hands, grasp the stem of the Magicloth Mop near the end and hold it firmly.



With the other hand, firmly grip the top portion of the mop-head and unscrew it counter-clockwise.



Then simply slide the mop-head down over both handles.

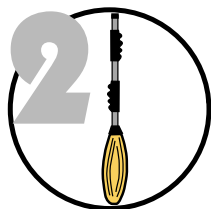


Your Magicloth Mop is machine-washable and **MUST dry NATURALLY!** DO NOT put in the dryer. To replace the Magicloth Mop reverse the instructions.

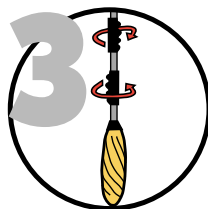
## Follow these easy instructions to wash or replace the Magicloth Mop.



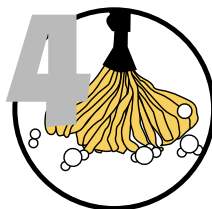
**Dip the Magicloth Mop in your bucket.**



**Lift the Magicloth Mop out of the bucket and draw the lower handle upward, keeping the mop verticle.**



**Lift on bottom handle, twist on top handle to a tight position in opposite direction.**



**Hold the Magicloth Mop in the verticle position, turn handle until the strands are completely aligned, then release lower handle and resume mopping.**



Distributed Exclusively Worldwide By:  
**Jesco International Ltd., Inc.**  
1421 Westway Circle  
Carrollton, Texas 75006-3733 USA  
888-554-4408 (Fax) 800-492-5888

**JESCO® WWW.USJESCO.COM**